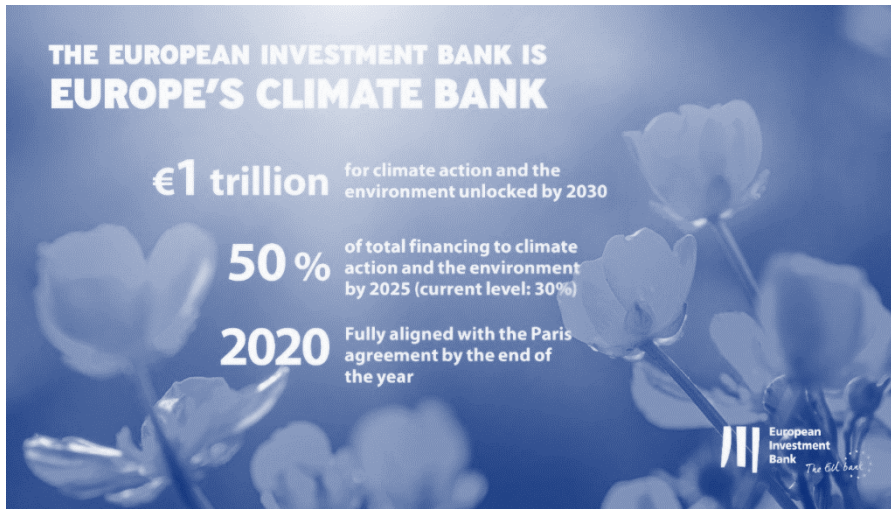


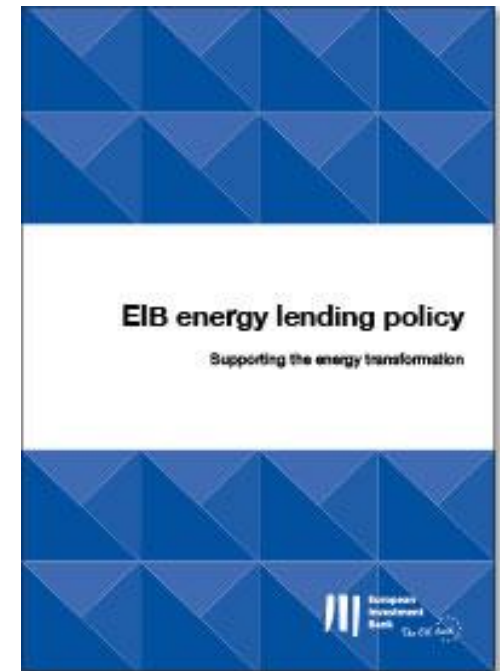
EIB and ELENA technical assistance

Louise White

Coordinator of the ELENA Facility



- **Energy efficiency first** principle
- Financing up to 75% of EE costs
 - Lending products usually intermediated for EE
 - Focus on building rehabilitation
- **Renewable energy**
- Lending driven by Paris Agreement and Clean Energy for All Package



Technical Assistance



UPSTREAM

- **Policy & programme** advice
- **Preliminary** project assessment

PREPARATION

- **Technical advice** to promoters prior to appraisal
- Advice on **financial structuring**
- Selection (ToR) & supervision of **consultants**

IMPLEMENTATION

- Advice on **project implementation**
- **Enhanced monitoring** in delayed projects

✓ **ELENA (European Local Energy Assistance)**

✓ **JASPERS (Joint Assistance to Support Projects in European Regions)**

✓ **FIA (Financial Instruments Advisory)**

✓ **INVEST EU Advisory Hub**



- **European Local Energy Assistance**
Established in 2009
- Based on an agreement between EIB and EC
- Grant for **preparation** (not implementation) of energy saving investment programmes
- Over **€290m awarded** to projects supporting approx. **€9.5bn investments**



SUPPORTING SUSTAINABLE INVESTMENT



ENERGY EFFICIENCY

20x



RESIDENTIAL

10x



TRANSPORT

10x

Every Euro of ELENA Grant linked to real investment

Investment Programmes at least EUR 30m



- Allocated on a first come, first served basis
- No calls or competitions
- Applicants will receive direct EIB support to prepare the ELENA application for Commission approval
- Focus is on feasible investment results within 3-4 year period



PHASE 2

Full Proposal - developed and refined together with EIB

Investments, costs, savings, scope...
EIB experts support you in the process

Engage

PHASE 1

Pre-Application & Eligibility Check

Discover the possibilities and meet the baseline criteria



PHASE 3

Submission to EC

Your final proposal is submitted to the European Commission and after approval the ELENA contract is signed

Start ELENA Project



GRANT FUNDS UP TO 90% OF PREPARATION COSTS

Internal staff

- ✓ Costs of personnel clearly assigned to the project
- ✓ Salaries, social security charges and other statutory costs



External experts

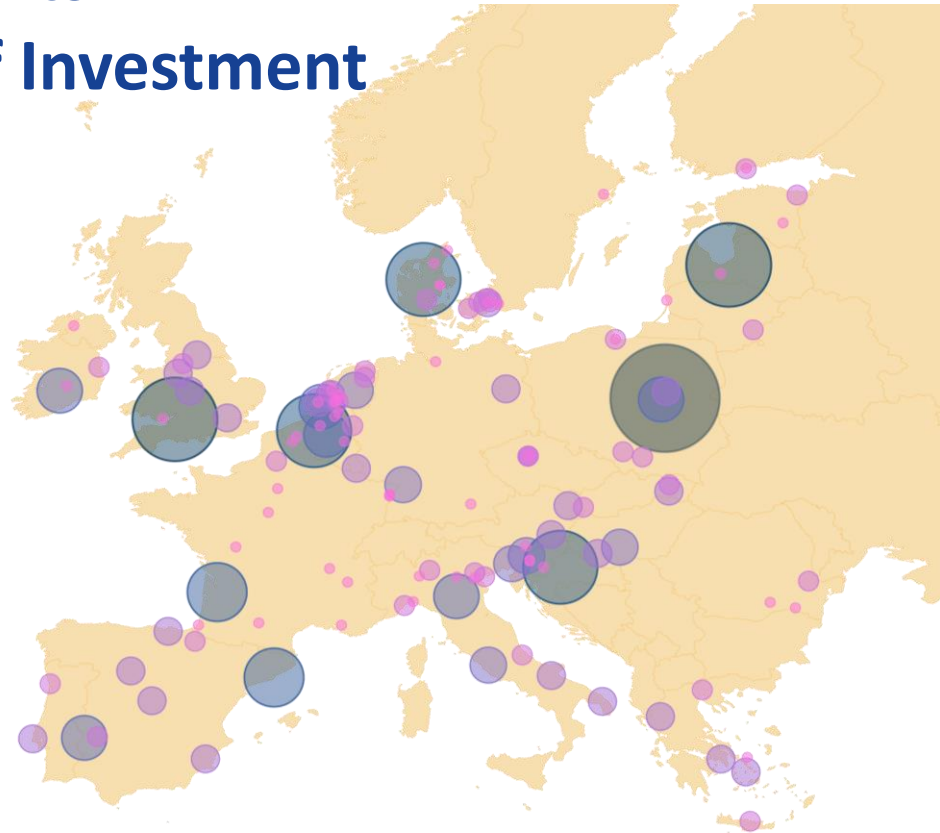
- ✓ Feasibility, design and market studies
- ✓ Structuring of programmes, business plans, energy audits
- ✓ Legal/financial advisory
- ✓ Preparing of tendering procedures
- ✓ Bundling of smaller projects to form bankable packages



EUR 290m ELENA grants Supporting over EUR 9.5 bn of Investment

Grants typically about EUR 2m

166 Projects across the EU





ELENA Project GREATER RENOVATION AND ENERGY OF HOMES (GREEN HOMES)



ELENA Beneficiary: Boligselskabet Sjælland
(BOSJ)

The ELENA TA EUR 1.9m grant

Supporting the BOSJ social housing association in their efforts to complete the EE refurbishments of more than 1,200 social housing units.

Investment targeted EUR 35.8m

The project will also include building-integrated RE technologies through the **set-up of energy communities**

ELENA funded team activities includes energy audits, getting the financing, stakeholder engagement and building pipeline



THANK YOU

More information at ELENA facility www.eib.org/elena

Can contact for first discussion : elena@eib.org

Preliminary ELENA application form on website – fill it out to clarify scope and eligibility

Eligible investment programmes

SUSTAINABLE ENERGY

- EE renovations of public and private buildings
- Public lighting e.g. Street and traffic lighting
- Integration of renewable energy sources into the buildings
- Investments in district heating/cooling networks
- Local energy facilities that support EE/RE (e.g. smart grids)

Investment programmes implemented by the final beneficiary or by a third party

↑
ELENA

Eligible investment programmes

RESIDENTIAL BUILDINGS

- EE refurbishment of residential buildings
- Integration of renewable energy sources into the buildings
- Project development activities:
 - providing support for energy performance certificates or energy audits,
 - access to financing: help households to access financing from financial institutions, and/or available grants,
 - setting up One Stop Shops etc.

Investment programmes implemented by the final beneficiary or by a third party

ELENA

Eligible investment programmes

SUSTAINABLE TRANSPORT

- Investments in the use and the integration of innovative solutions going for alternative fuels in urban mobility –technical or organizational
- Vehicles, recharging infrastructure, energy-efficient measures and systems
- Increasing efficiency and sustainability of Urban Logistics
- Intelligent Transport Systems (ITS)
- Integration of services and technologies

Investment programmes implemented by the final beneficiary or by a third party

↑
ELENA

Application process

